



GREEN BRIDGE METALS

CSE: GRBM | OTCQB : GBMCF | FWB : J48

Resources for the Future

Copper and Critical Minerals in North America

Corporate Presentation

February 2026

Forward-Looking Disclaimer

Except for the statements of historical fact, this presentation contains “forward-looking statements” and “forward-looking information” the meaning of the applicable securities legislation (collectively, “forward-looking information”) that is based on expectations, estimates and projections as at the date of this presentation. Forward-looking information in this presentation includes information about the South Contact Zone Properties and the Chrome Puddy Property of the Company; general business and economic conditions.

Factors that could cause actual results to differ materially from those described in such forward-looking information include, but are not limited to: the exploration and development of the South Contact Zone Properties and the Chrome Puddy Property of the Company may not yield any commercially beneficial results to the Company; historical resource estimates may not result in any proven mineralization; risks associated with the business of the Company; business and economic conditions in the mining industry generally; changes in general economic conditions or conditions in the financial markets; changes in laws (including regulations respecting mining concessions); and other risk factors as detailed from time to time.

The forward-looking information in this presentation reflects the current expectations, assumptions and/or beliefs of the Company based on information currently available to the Company. In connection with the forward-looking information contained in this presentation, the Company’s ability to operate profitably and competitively; profitable use of the Company’s assets going forward; and the Company’s ongoing partnerships with third parties. The Company has also assumed that no significant events occur outside of the Company’s normal course of business. Although the Company believes that the assumptions inherent in the forward-looking information are reasonable, forward-looking information is not a guarantee of future performance and accordingly undue reliance should not be put on such information due to the inherent uncertainty therein.

Any forward-looking information in the presentation speaks only as of the date on which it is made and, except as may be required by applicable laws, the Company disclaims any intent or obligation to update any forward-looking information, whether as a result of new information, future events or results or otherwise.

Michael Dufresne, M.Sc., P.Geol., P.Geo of APEX Geoscience Ltd. has reviewed the presentation and assumes responsibility for scientific and technical disclosure contained herein.

Confidentiality

This presentation and the contents herein is strictly confidential. This presentation is not a public document and may not be shared or reproduced.

Why Green Bridge Metals?

Cu Copper	Ni Nickel	Ti Titanium	Pd Palladium	Pt Platinum	Au Gold	V Vanadium	Co Cobalt
---------------------	---------------------	-----------------------	------------------------	-----------------------	-------------------	----------------------	---------------------

Focus on Developing Tier One Critical Mineral Assets in North America

Strategic portfolio of projects designed to minimize risk, unveil potential, and enhance value



Tier One Jurisdictions

Federal government support and incentive for critical mineral development in both United States and Canada



Three Mineral Resource Projects

Serpentine: Copper, Nickel
Titac: Titanium, Copper, Vanadium
Chrome Puddy: Nickel



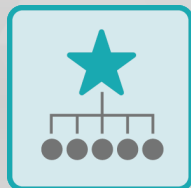
Domestic Critical Minerals

Leveraging and growing existing resource base in the U.S. and Canada: Focus on copper, nickel, vanadium and titanium



Catalysts for Growth

Generating compelling exploration targets and developing known Mineral Resources in portfolio



Pipeline of Projects with Tier One Potential

Five critical mineral projects in the portfolio, all with exceptional potential to be developed into a Tier One asset.



Strong Technical and Business Leadership

Local Minnesota technical team with over 28 years of experience in the Duluth Complex and surrounding area.
Business management team with over 45 years combined experience in capital markets

*Tier One defined by Minex Consulting as large, long-life, low-cost mines: >\$1B risk-adjusted NPV, >20-year mine life, lowest quartile of costs

Critical and Strategic Minerals Supply

Cu Copper	Ni Nickel	Ti Titanium	Pd Palladium	Pt Platinum	Au Gold	V Vanadium	Co Cobalt
---------------------	---------------------	-----------------------	------------------------	-----------------------	-------------------	----------------------	---------------------

Cu Copper	Imported: 45%
	Primary sources: Chile, Peru, Mexico
	Futurecast: U.S. Demand for copper expected to double by 2035. Domestic supply dwindling
Ni Nickel	Imported: 65%
	Primary sources: Norway, Australia, and others
	Futurecast: U.S. demand for nickel expected to outpace supply Single domestic source set to close in 2025
Ti Titanium	Imported: 80%
	Primary sources: China, Kazakhstan, Australia
	Futurecast: Supply chain shortages in aerospace and defense sectors Historically 1/3 of supply sourced from Russia
V Vanadium	Imported: 95%
	Primary sources: China, South Africa, Brazil
	Futurecast: Supply chain shortage imminent due to geopolitical tensions No existing domestic supply.

Corporate Overview

Opportunities for domestic production of FOUR critical minerals

Copper-Nickel-PGE-Cobalt	
Opportunities:	Serpentine – Development Skibo – Exploration Wyman-Siphon – Exploration Chrome Puddy – Exploration
Commodities:	Cu, Ni, Co, Pd, Pt, Au
Location:	Minnesota, U.S.A. Thunder Bay Mining District Ontario, Canada

Titanium-Copper-Vanadium	
Opportunities:	Titac - Development Boulder - Exploration
Commodities:	Cu, TiO ₂ , PGE, V
Location:	Minnesota, U.S.A.

Capital Structure

CSE Listing	GRBM
I/O Shares	196,758,632
Market Cap (CAD)	\$29.5M
52 Week High/Low	\$0.23/\$0.08

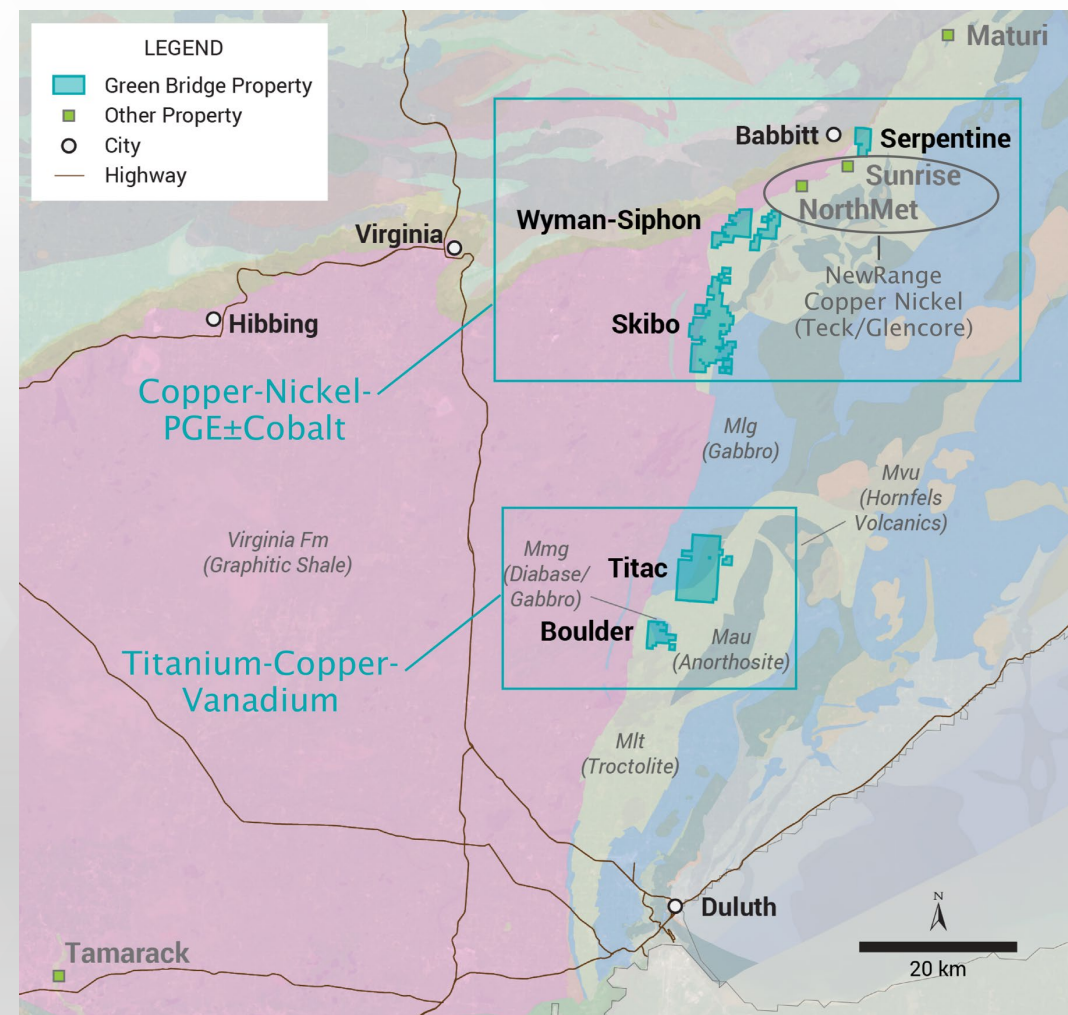
All Figures as of January 12, 2026, unless otherwise stated

South Contact District

Advanced Opportunity in Duluth Complex, MN USA

- **Three Magmatic Cu–Ni–PGE- Co properties:** Serpentine, Skibo, Wyman-Siphon
- **Two TiO₂-Cu-Vanadium Properties:** Titac, Boulder
- Opportunities for high-grade massive sulphide and disseminated styles of Cu-Ni ±PGEs mineralization
- Emerging exploration model of Oxide Ultramafic Intrusions for both Cu-Ni ±PGEs and Ti-V mineralization
- Current titanium mineral resource and prospectivity to expand the known resource in 2026-27 to include copper

Cu	Ni	Ti	Pd	Pt	Au	V	Co
Copper	Nickel	Titanium	Palladium	Platinum	Gold	Vanadium	Cobalt



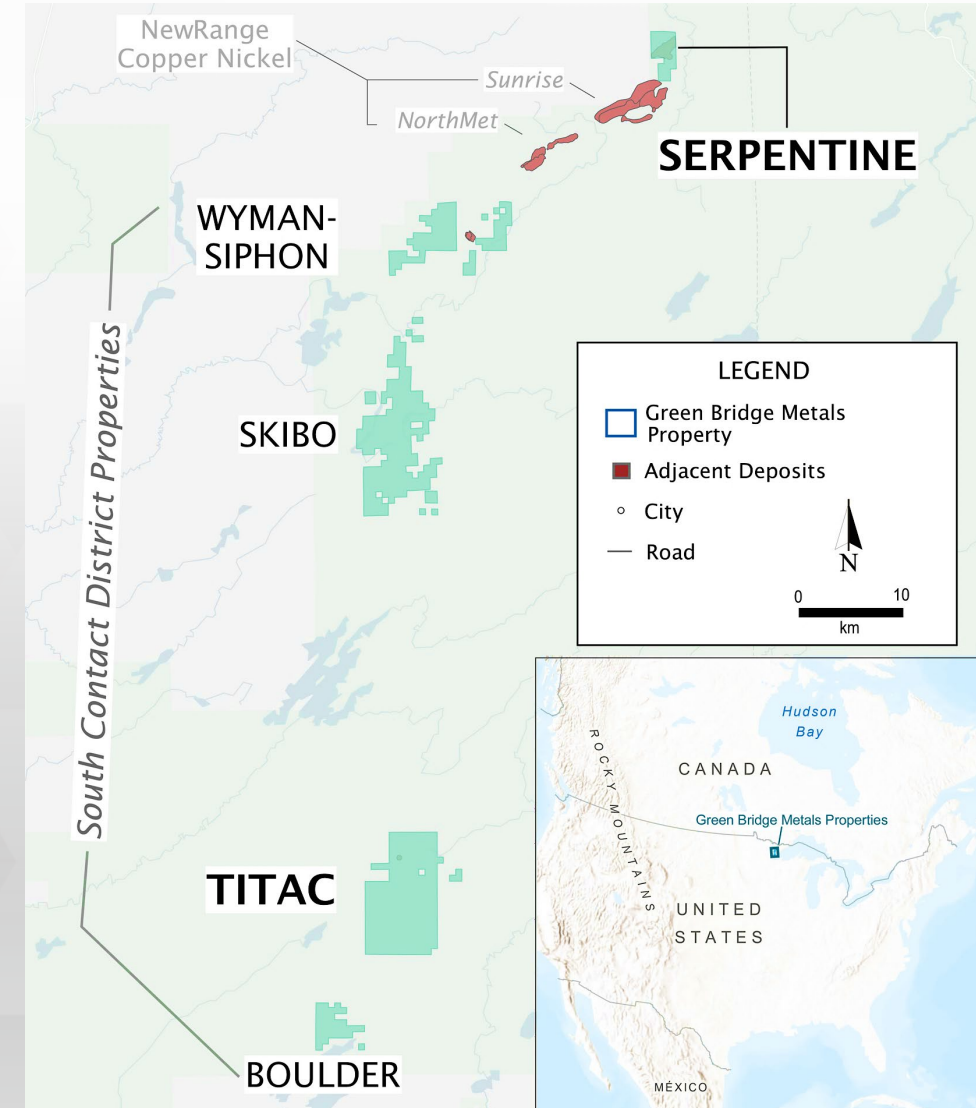
Serpentine Copper – Nickel Development Asset

Inferred Mineral Resource at Serpentine:

280Mt @ 0.53 CuEq^{2*} Inferred, 21.6 Mt 0.69% CuEq Indicated

Pit Area Classification	Tonnes (k)	Cu (%)	Ni (%)	Cu-Eq (%)
Upper 100				
Indicated	11,616	0.34	0.11	0.50
Inferred	120,307	0.32	0.11	0.47
Lower 300				
Indicated	7,902	0.49	0.15	0.70
Inferred	153,588	0.40	0.13	0.57
Lower 400				
Indicated	354	0.34	0.11	0.47
Inferred	5,607	0.45	0.13	0.63
Massive Sulphide 500				
Indicated	1,775	1.16	0.52	2.00
Inferred	445	1.12	0.48	1.90
Total				
Indicated	21,646	0.46	0.16	0.69
Inferred	279,947	0.37	0.12	0.53

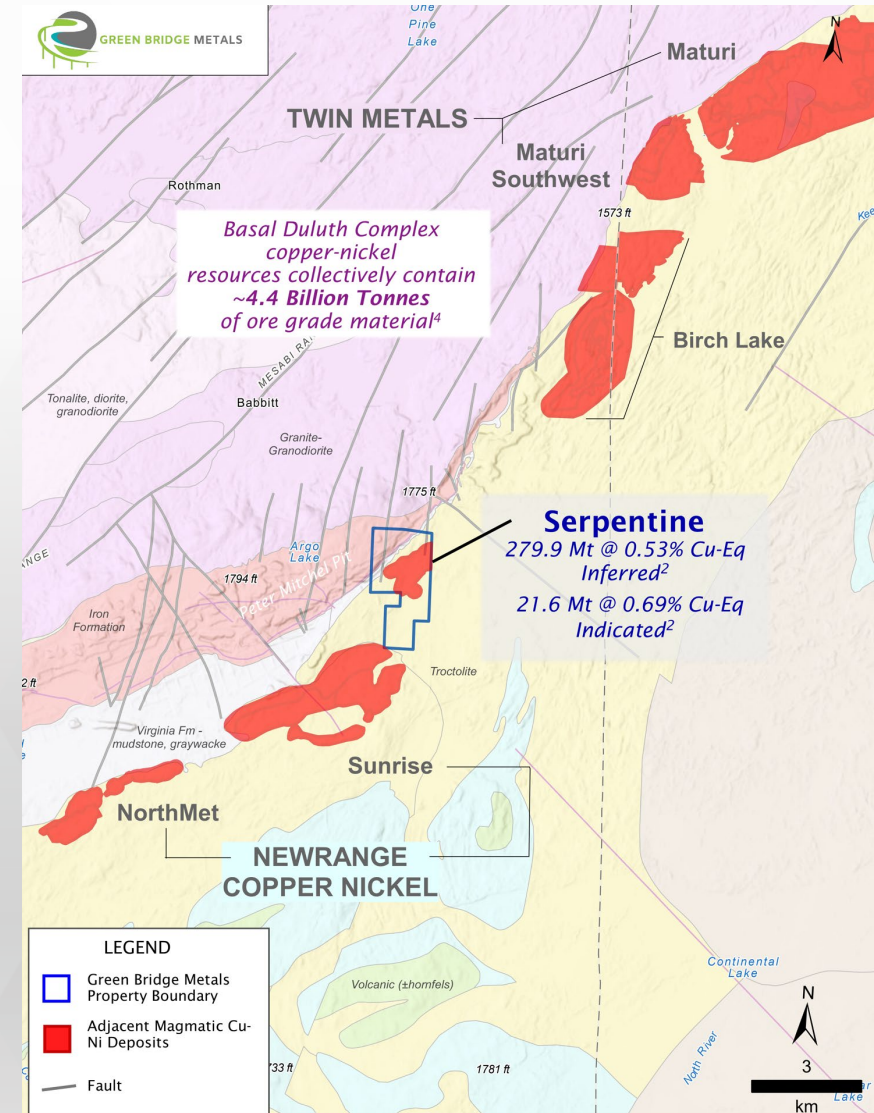
*PGE's in the deposit were not included in historical mineral resource estimate
Future work will add these critical elements to the resource.



Serpentine – Cu-Ni: Pathway to Pre-Feasibility

Mesabi Mining District Northern Minnesota, U.S.A.

- Pre-Feasibility Pathway:
 - Exploration drilling in Q2-Q3 2026
 - Infill Drilling: 25,500 meters of core drilling
 - Water Monitoring Wells
 - Metallurgical Studies
 - Engineering and Environmental
- Copper-Nickel with Potential PGE credits at shallow depth
- Preliminary (2012) metallurgical work indicated high recoveries of copper and nickel
- On trend with world-class NorthMet and Sunrise deposits
- Situated in established mining jurisdiction with neighboring railways, roadways, processing facilities and other infrastructure



Serpentine – Cu-Ni±Co: Solid Infrastructure

Mesabi Mining District Northern Minnesota, U.S.A.

- Centrally located in mining friendly jurisdiction with a history of iron mining (Iron Range, Minnesota)
- Shares northern boarder with historic Cleveland-Cliffs Peter Mitchell, open-pit iron mine.
- Site easily accessible to paved roads, electrical infrastructure and railroad.
- Ore processing infrastructure exists in the region

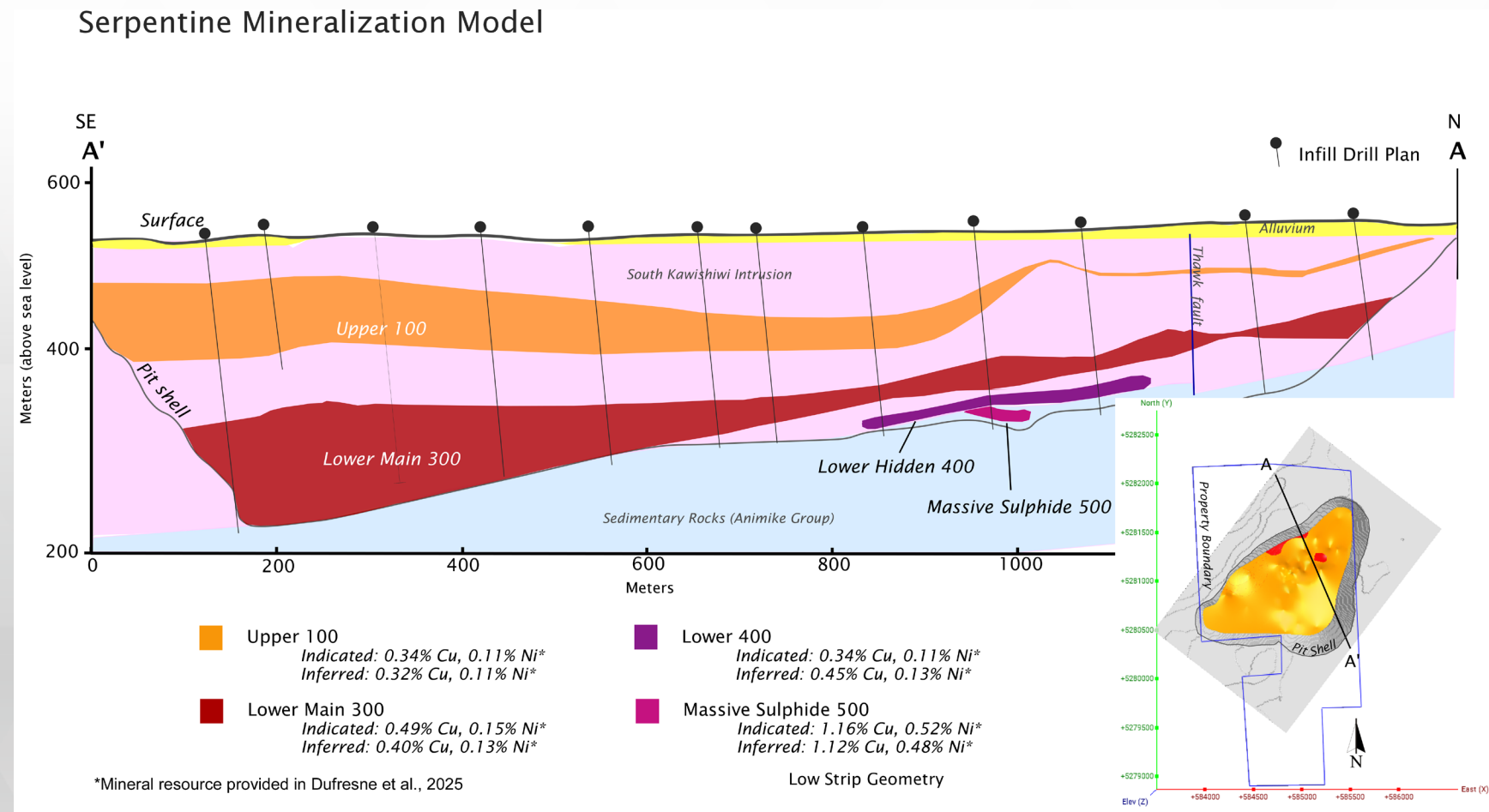


Serpentine – Economic Copper-Nickel Opportunity

Mesabi Mining District Northern Minnesota, U.S.A.

Serpentine Objectives

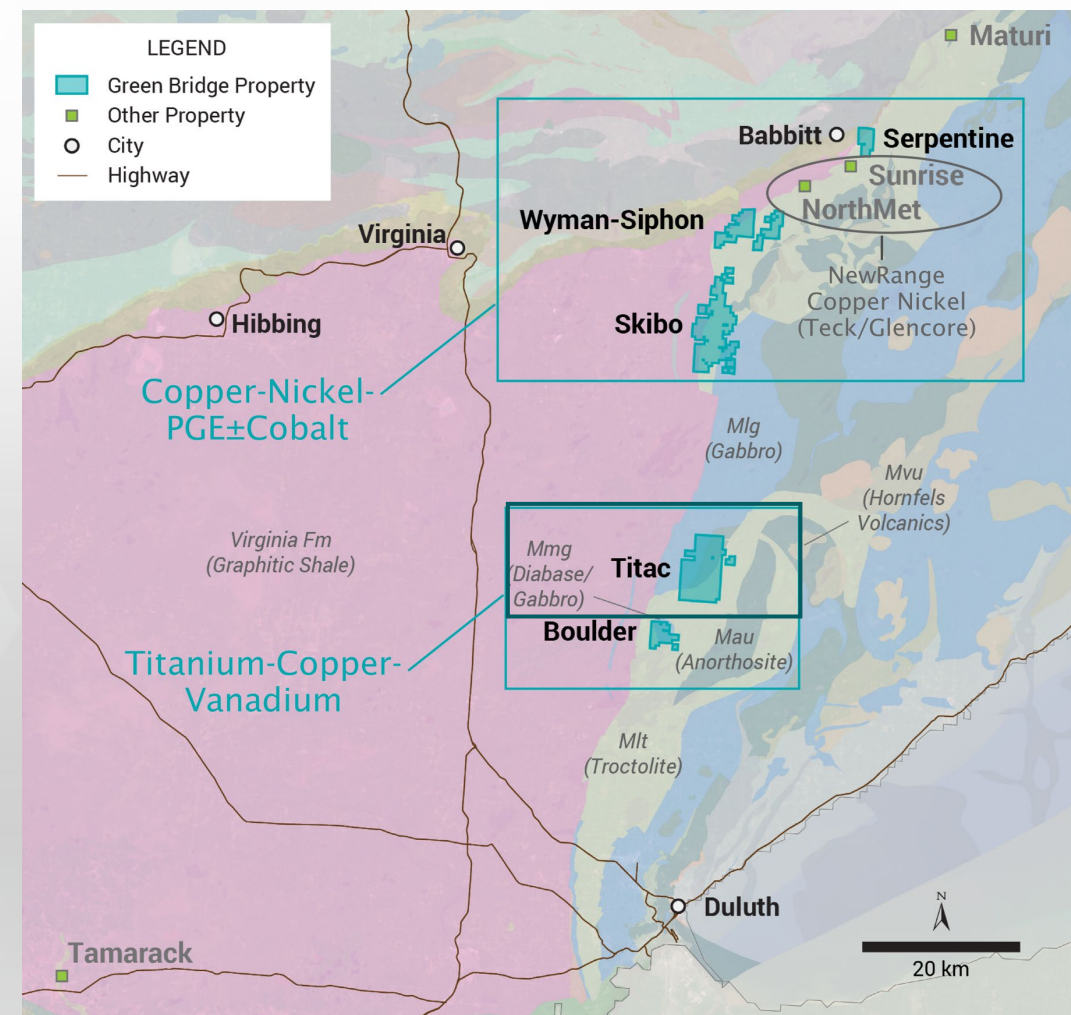
- Bring Resource from Inferred to Indicated
- Increase overall CuEq grade by expanding known high grade horizon
- Optimize metals value by incorporating PGE assays in future resource models
- Metallurgical testing
- **2027:** Preliminary Economic Assessment
- **2029:** Pre-Feasibility Study
- Optimize Low Strip Ratio



South Contact District

Advanced Opportunity in an Underexplored Region of the Duluth Complex, MN USA

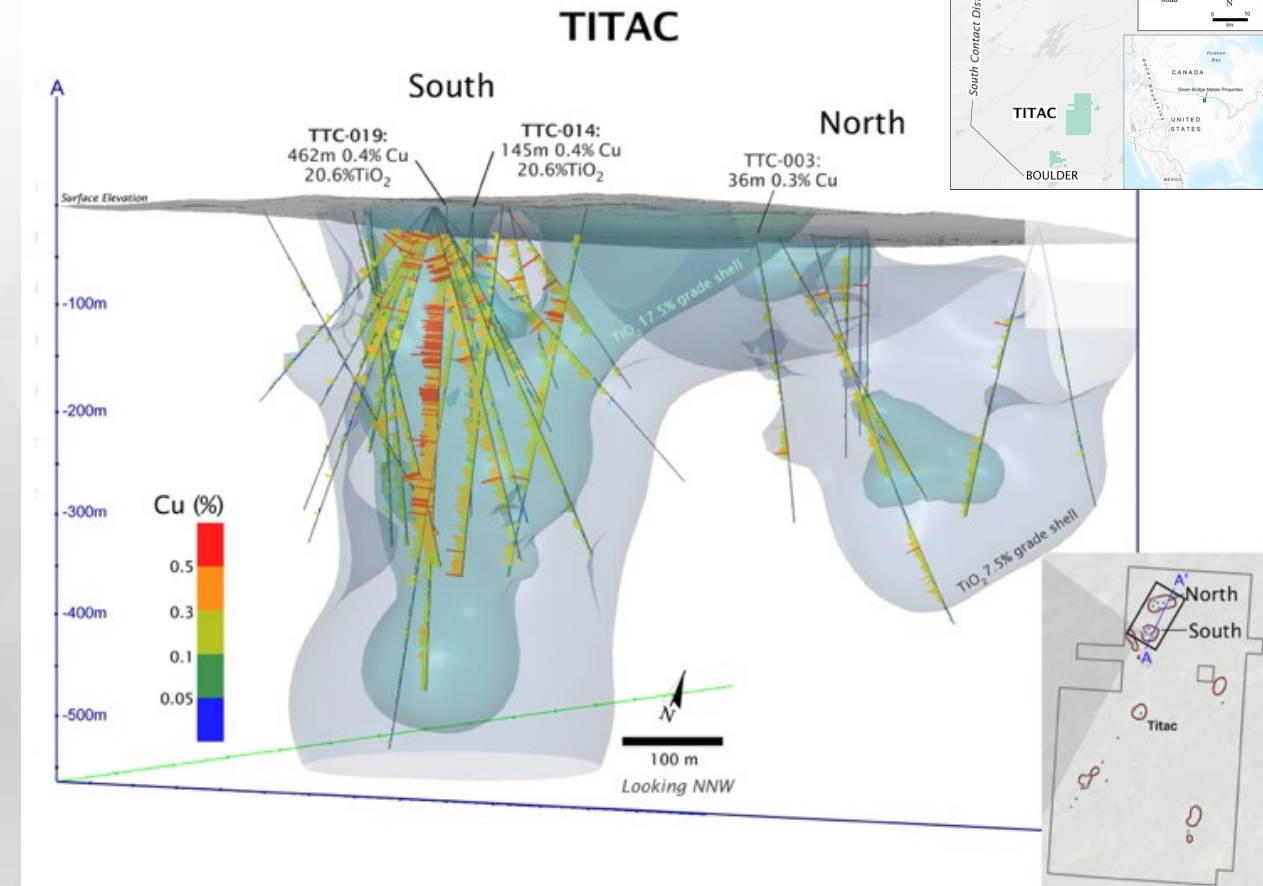
- **Three Magmatic Cu–Ni–PGE- Co properties:** Serpentine, Skibo, Wyman-Siphon
- **Two TiO₂-Cu-Vanadium Properties:** Titac, Boulder
- Opportunities for high-grade massive sulphide and disseminated styles of Cu-Ni ±PGEs mineralization
- Emerging exploration model for oxidized ultramafic intrusions for both Cu-Ni ±PGEs and Ti-V mineralization
- Current titanium mineral resource and prospectivity to expand the known resource in 2025-26 to include copper



Titac – Titanium Resource with Copper Potential

Northern Minnesota, U.S.A.

- High-grade Titanium Resource - Expandable in All Directions
- Opportunity to Expand Resource @ Titac North
- 46.6 Mt of 15% TiO_2 mineralization 13.3 Mt Ilmenite
- Significant Copper Mineralization Unrealized
- Magmatic copper mineralization within current TiO_2 resource:
 - TTC-014: 173m of 0.39% Cu, 14.9% TiO_2
 - TTC-019: 461.9m of 0.37% Cu, 20.6% TiO_2
 - TTC-027: 356m of 0.25% Cu, 14.1% TiO_2
 - TTC-015: 121.6m of 0.29% Cu, 13.3% TiO_2

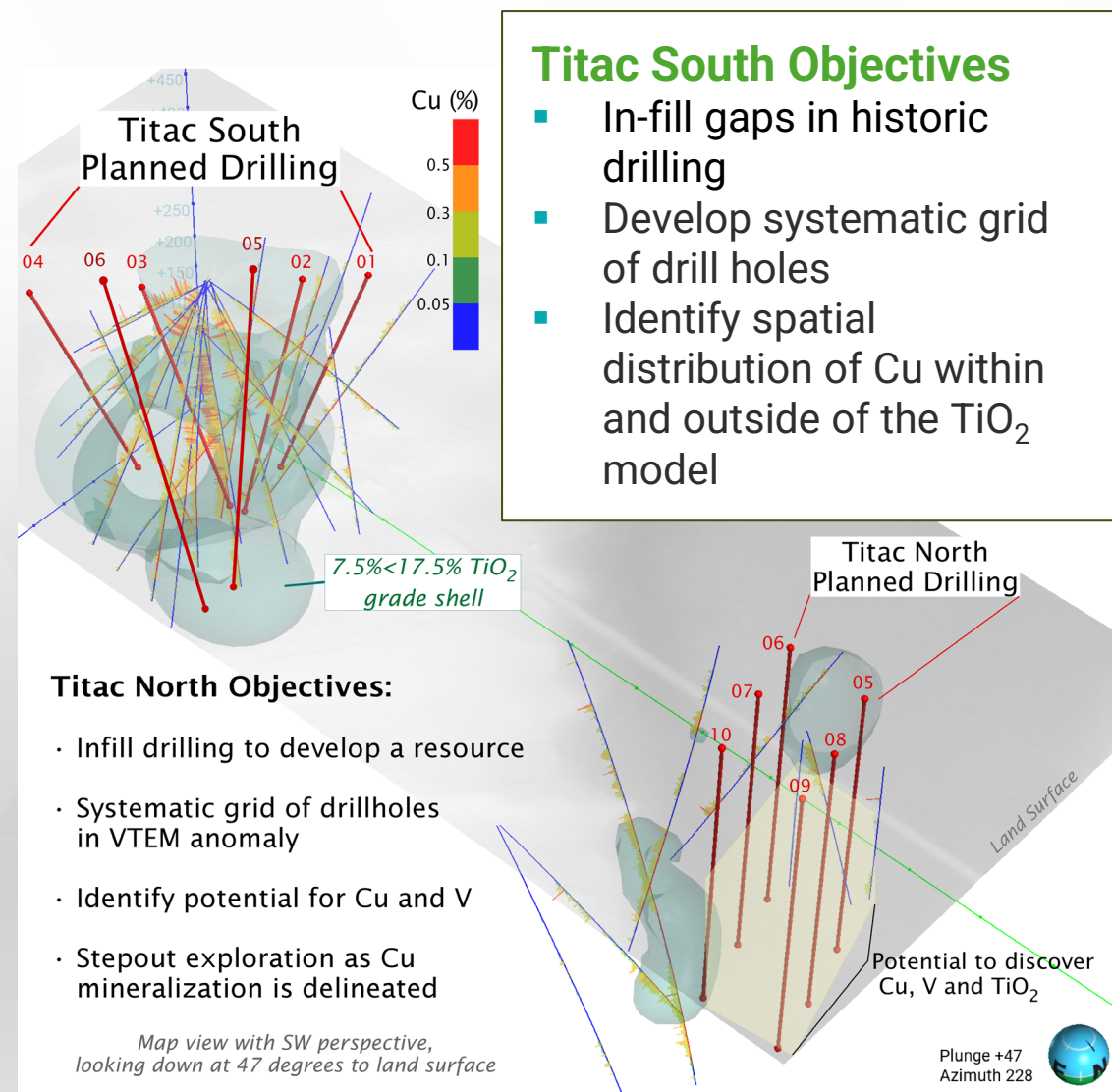


Titac – Phase 1-2 Plan

Potential for Copper Resource and Titanium PEA

Similar TiO₂ Deposits Globally:

- Tellness Mine (Norway):
 - 300Mt, 15% TiO₂
 - Hosted in norite
 - Largest in the world
- Titan Mine (Ontario):
 - 49Mt, 14.8% TiO₂
 - Associated with ultramafic rocks (gabbro-leucotroctolite)
- Mount Peak (Australia):
 - 160Mt, 5.31% TiO₂
 - Associate with layered mafic intrusions

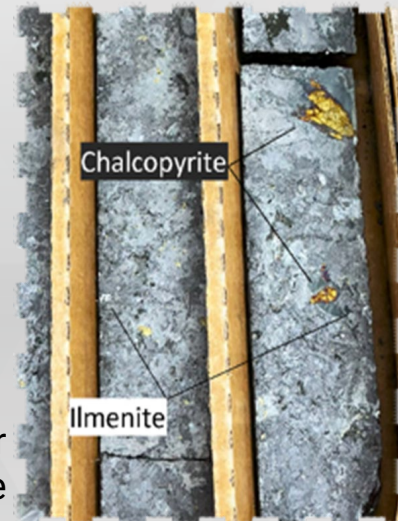


Titac – Exploration Potential

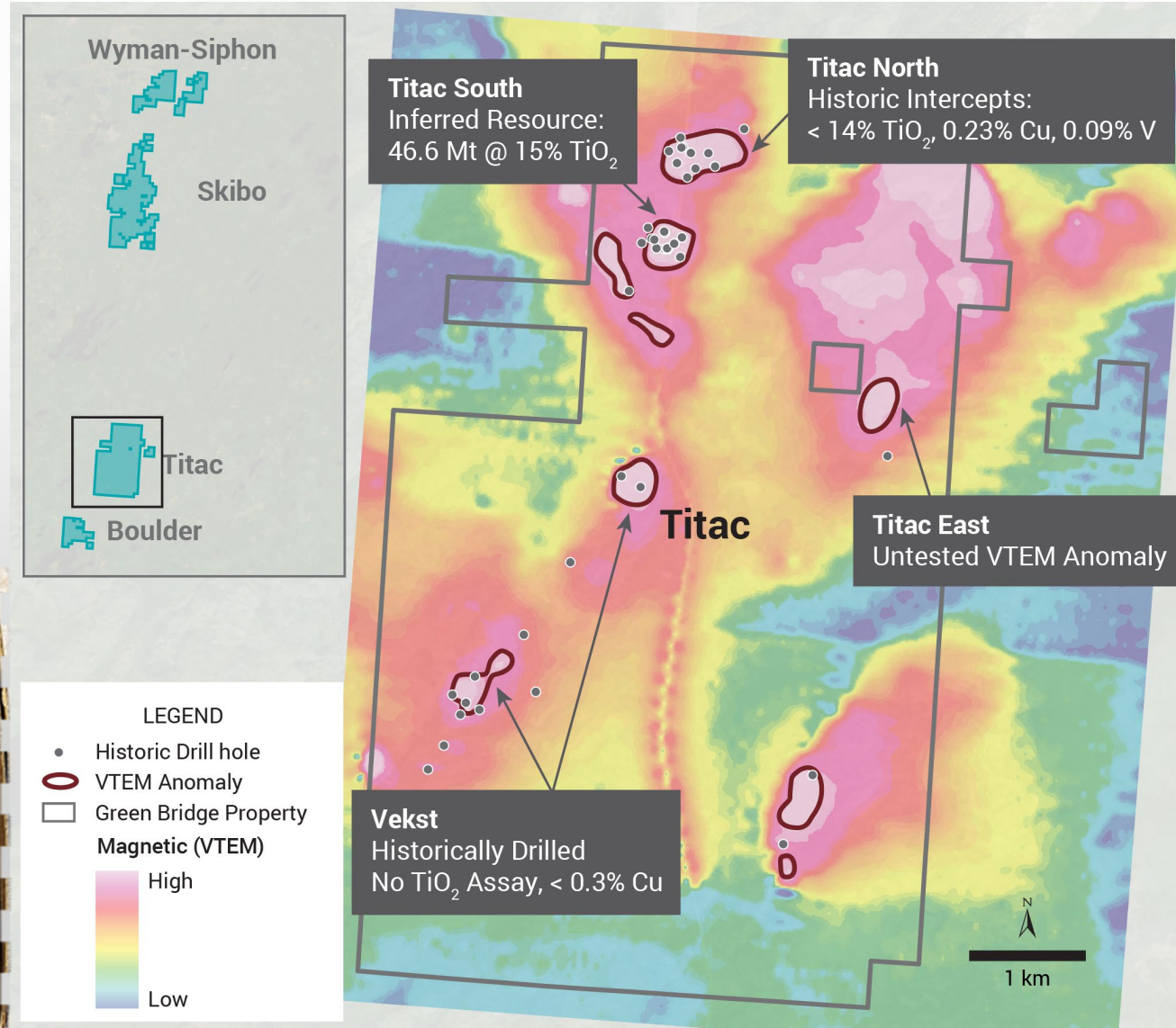
Possibility to Double TiO_2 Resource @ Titac North with Additional Copper Potential

Titac East Anomaly UNTESTED

- Potential for massive, magmatic sulphide veins outside the OUI's
- VTEM Anomalies identified based on geophysical similarities – create magnetic high “bullseyes”



Titanium and Copper Mineralization in Core



Skibo Prospect – Magmatic Cu-Ni-PGE

Northern Minnesota, U.S.A.

- Cu-Ni-PGE ±Co mineralization hosted in troctolites and other rocks associated with the rift-related mafic series
- Mineralization includes massive and disseminated Cu-Ni as well as PGE's and cobalt
- Historical drilling of 10 holes identified massive sulphide veins containing up to 1.4% Cu and 0.7% Ni
 - Of 10 holes, ~50% of the core remained unanalyzed – opportunity to complete sampling and identify larger intervals of mineralization.



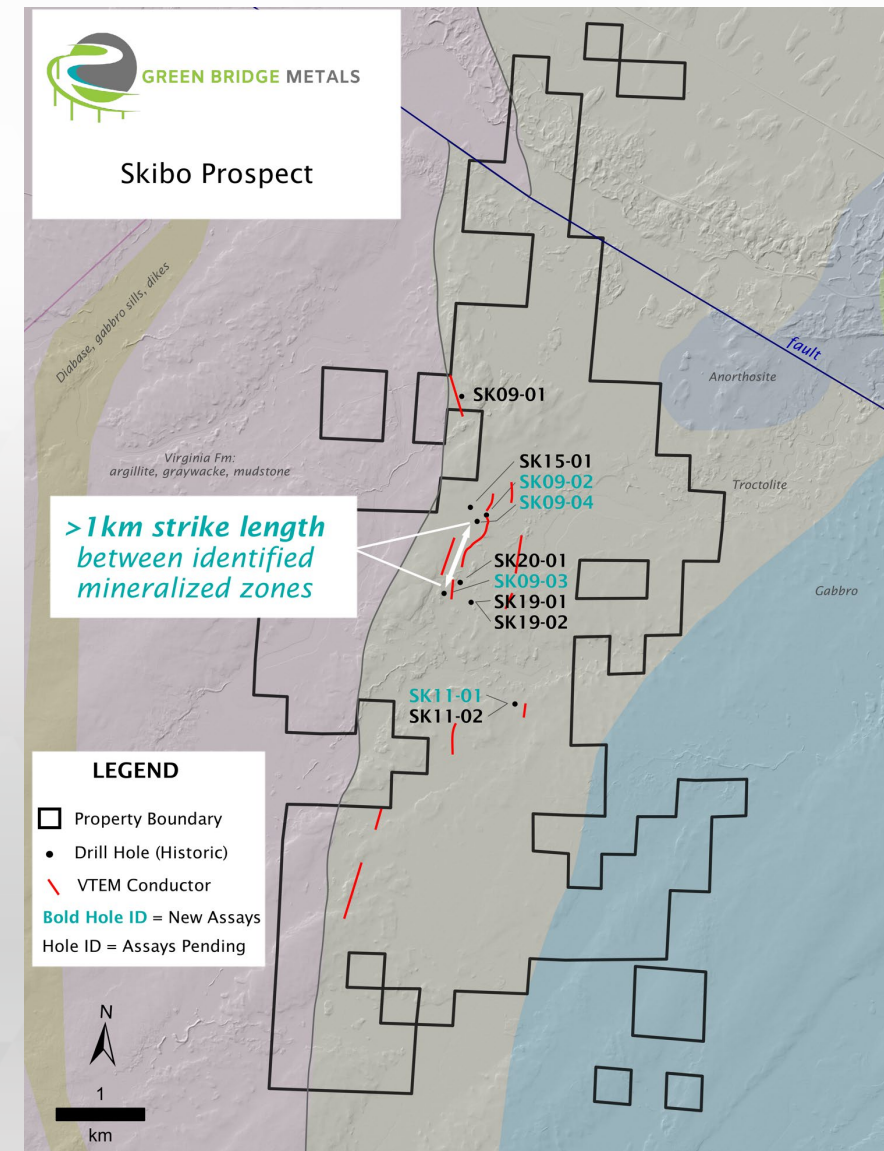
Skibo Prospect – Phase 1 Assay Results

Northern Minnesota, U.S.A.

Disseminated Mineralization Over 1km Strike Length: Significant Cobalt and PGM Byproducts

Results Highlights:

- SK09-02: Results include 187.3m of new sampling
 - 3.0m of 1.6% Cu, 0.4% Ni, and 18.3 g/t PGE
 - 3.0m of 1.1% Cu, 0.4% Ni, and 4.4 g/t PGE
 - **153m of 0.28% Cu, 0.15% Ni and 0.37 g/t PGE**
- SK09-03: Results include 311.3m of new sampling
 - **54.2m 0.26%, 0.15% Ni, 0.1 g/t PGE, 1982.6 ppm Co**
 - 113.5m 0.23% Cu, 0.09% Ni, 0.14 g/t PGE
 - 51.5m 475 ppm Co, 4.2% TiO₂
- SK09-04: Results include 267.3m of new sampling
 - 3.4m of 1.3% Cu, 0.2% Ni, 0.5 g/t PGE
 - 3.0m of 0.6% Cu and 0.2% Ni
 - **60.7m 0.24% Cu, 0.11% Ni**
 - 23.5m 0.23% Cu, 671.4 ppm Co



Wyman-Siphon – Proven Disseminated Cu-Ni Mineralization

Mesabi Mining District Northern Minnesota, U.S.A.

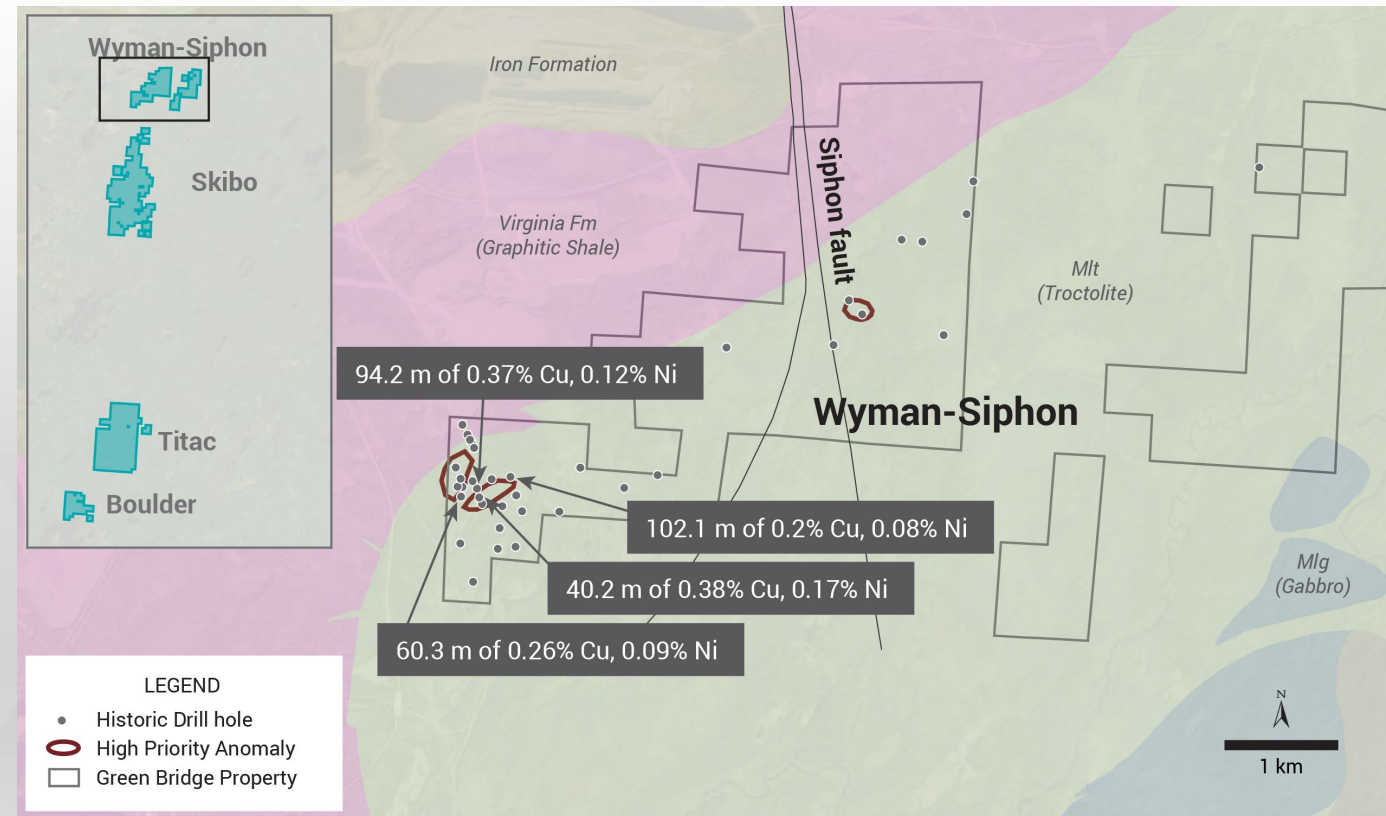
Cu	Ni	Pd	Pt	Au
Copper	Nickel	Palladium	Platinum	Gold

On Trend with Other World Class Cu-Ni Deposits

- Historical Inferred Mineral resource estimate of approx. 47 Mt 0.29% Cu, and 0.11% Ni*
- Presence of disseminated Cu-Ni mineralization based on historical drilling
- Numerous electro-magnetic conductors and structural features remain un-tested by drilling
- Same geologic domain as the NorthMet deposit (NewRange Copper Nickel)

*The historical 2008 Wyman MRE was not prepared in accordance with NI 43-101, Canadian Institute of Mining (CIM) Definition Standards for Mineral Resources and Mineral Reserves (May 2014), and CIM Estimation of Mineral Resources & Mineral Reserves Best Practices Guidelines (November 2019). The Company and the QP have referred to this estimate as a “Historical Mineral Resource Estimate (MRE)” and are not treating it, or any part of it, as a current MRE.

All sample results are considered historical and were collected and reported prior to the implementation of the standards for disclosure set forth in current NI-43-101 Guidelines. The QP has not done sufficient work to verify sample data, for historic exploration drilling.



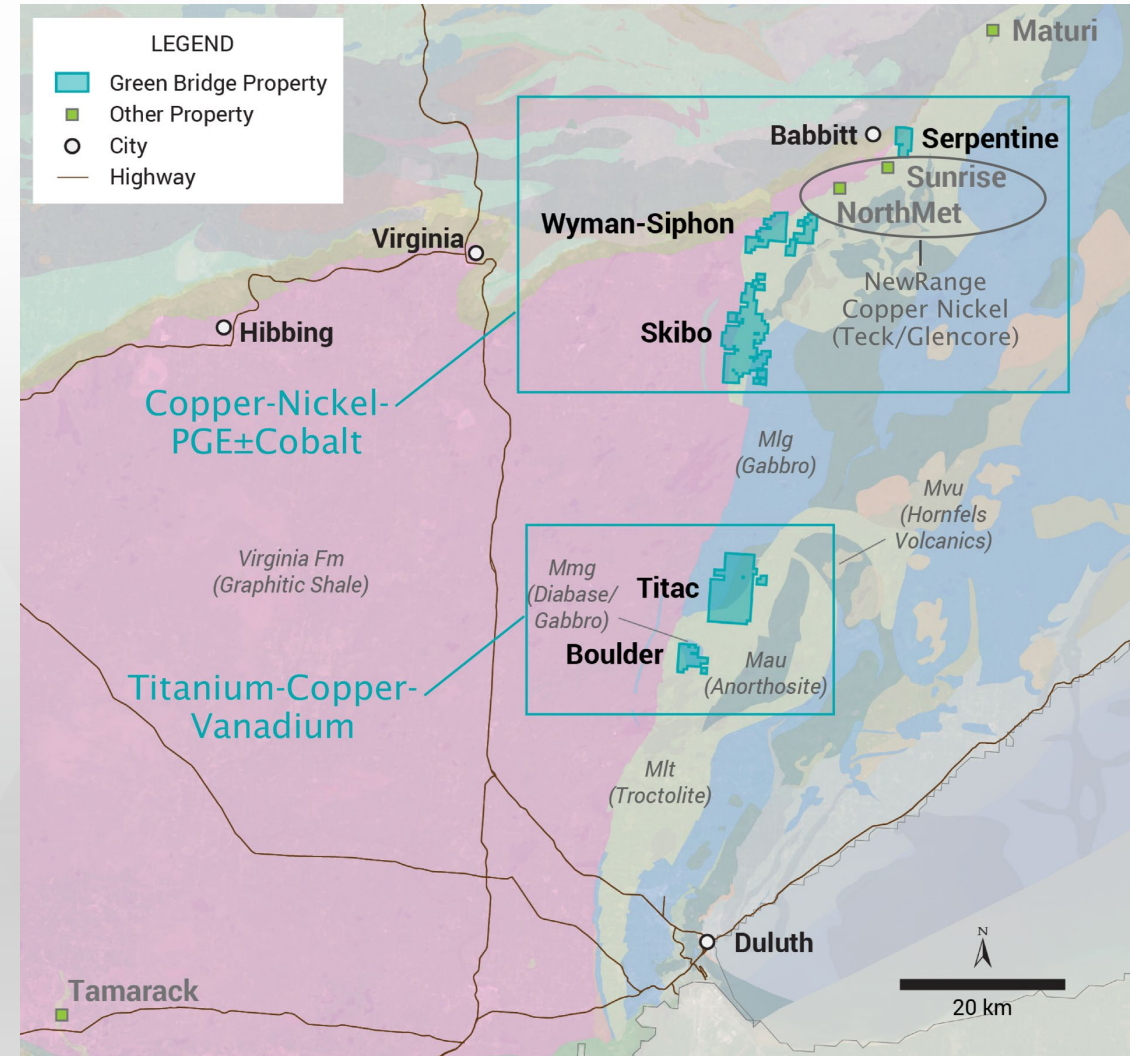
Green Bridge Metals Opportunity Summary

South Contact District: Copper-Nickel-Titanium-Vanadium Blue Sky

- District Scale land package with potential for critical and strategic mineral discovery and growth
- Realized potential for substantial copper nickel, titanium, & vanadium mineralization
- Mining friendly jurisdiction in the United States
- Possible source to contribute critical minerals for a North American supply chain

Serpentine: Copper-Nickel±Cobalt±PGE

- Established Copper-Nickel Inferred Resource
- Ready for infill development and exploration drilling
- Drill permitting in place for 2026
- 2027 PEA
- 2029 PFS





GREEN BRIDGE METALS

CSE: GRBM | OTCQB : GBMCF | FWB : J48

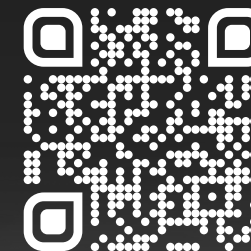
Contact

Investor Communication

investors@greenbridgemetals.com

1 (866) 750-3350

800 - 1199 West Hastings Street
Vancouver, BC V6E 3T5, Canada



References

- ¹Dufresne, M.B., et al. 2024. “Technical Report and Mineral Resource Estimate for the South Contact Zone Project, St Louis County, Minnesota,USA”. Apex Geoscience Ltd. Edmonton, AB, Canada. Green Bridge Metals Corp. September 18, 2024
- ²Dufresne, Michael B., Raffle, K.J., Purtich, E., Sutcliffe, Brown, F., 2025, TECHNICAL REPORT AND MINERAL RESOURCE ESTIMATE FOR THE SERPENTINE PROJECT, ST LOUIS COUNTY, MINNESOTA, U.S.A.. APEX Geoscience. July 14, 2025
- ⁴Hauck, S.A., Severson, M.J., Sanko, L., Barnes, S., Morton, P., Alminas, H., Foord, E., Dahlberg, E., AN OVERVIEW OF THE GEOLOGY AND OXIDE, SULFIDE, AND PLATINUM-GROUP ELEMENT MINERALIZATION ALONG THE WESTERN AND NORTHERN CONTACTS OF THE DULUTH COMPLEX. in Ojakangas, R. W., Dickas, A. B., and Green, J. C., eds., Middle Proterozoic to Cambrian Rifting, Central North America: Boulder, Colorado, Geological Society of America Special Paper 312.

Appendix

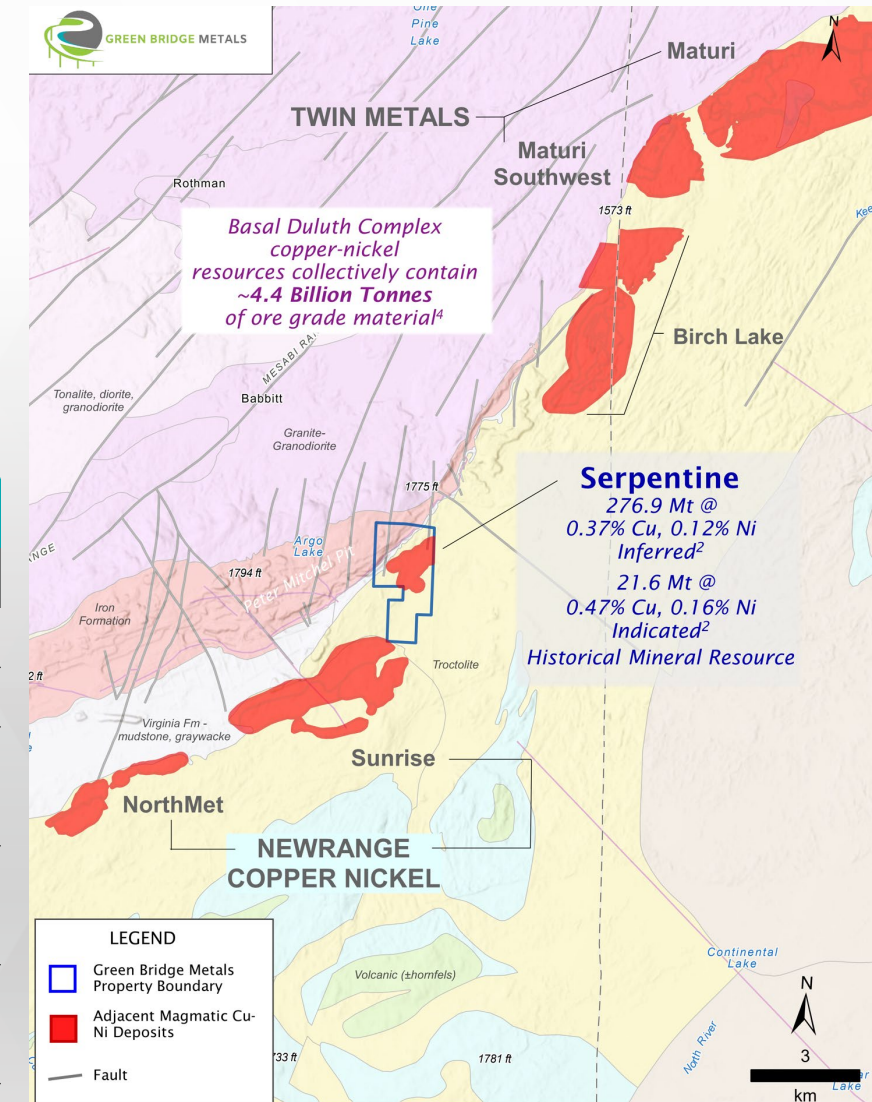
Serpentine – Adjacent Duluth Complex Copper-Nickel Deposits

Mesabi Mining District Northern Minnesota, U.S.A.

- Adjacent to NewRange's NorthMet and Sunrise deposits:
 - NorthMet project designated as a FAST-41 Project by U.S. Government for its importance to energy security.
 - Sunrise deposit maps to within 1km of Serpentine property
- Situated in established mining jurisdiction with neighboring railways, roadways, processing facilities and other infrastructure

Basal Duluth Complex Deposit Resources

Deposit Name	Operator	Category	Tonnes (Mt)	Cu (%)	Ni (%)
Maturi ³	Twin Metals Minnesota	Proven & Probable	484	0.6	0.19
Maturi Southwest ³	Twin Metals Minnesota	Proven & Probable	43	0.48	0.17
Birch Lake ³	Twin Metals Minnesota	Indicated	99.7	0.52	0.16
		Inferred	239	0.46	0.15
Sunrise ⁵	NewRange Copper and Nickel	Measured & Indicated	2207	0.43	0.1
		Inferred	1423	0.37	0.09
NorthMet ⁶	NewRange Copper	Proven & Probable	289	0.29	0.08
		Measured & Indicated	702	0.25	0.07



Chrome-Puddy Project – Serpentinized-Ultramafic Hosted Nickel Mineralization

Thunder Bay Mining District, Ontario Canada

- Located within Thunder Bay Mining Division 85km north of Lac des Isles Palladium Mine
- 1,450 Hectares covering 6.5km of prospective ultramafic intrusion
- Road access to eastern property boundary – 27km from Highway 527
- Historical Inferred Mineral Resource:
 - 30 Mt of 0.25% to 0.28% Ni^{1*}
- Exploration will target similar grades over a 1.9 km strike length.
- Several untested conductors within 5.5 km long ultramafic intrusion that hosts the mineralization provides considerable exploration upside
- Property is **fully permitted** for drilling

1. L'Heureux, R.B., Schoeman, P.. 2024. "Updated Technical Report for the Chrome Puddy Property, Ontario, Canada". Apex Geoscience Ltd. Edmonton, AB, Canada. Green Bridge Metals Corp. May 31, 202

* The Company and the QP have referred to this estimate as a "historical Mineral Resource Estimate (MRE)" and are not treating it, or any part of it, as a current MRE. A QP has not done sufficient work to classify the historical estimate as a current MRE and the MRE predates current CIM standards.



Chrome-Puddy Project

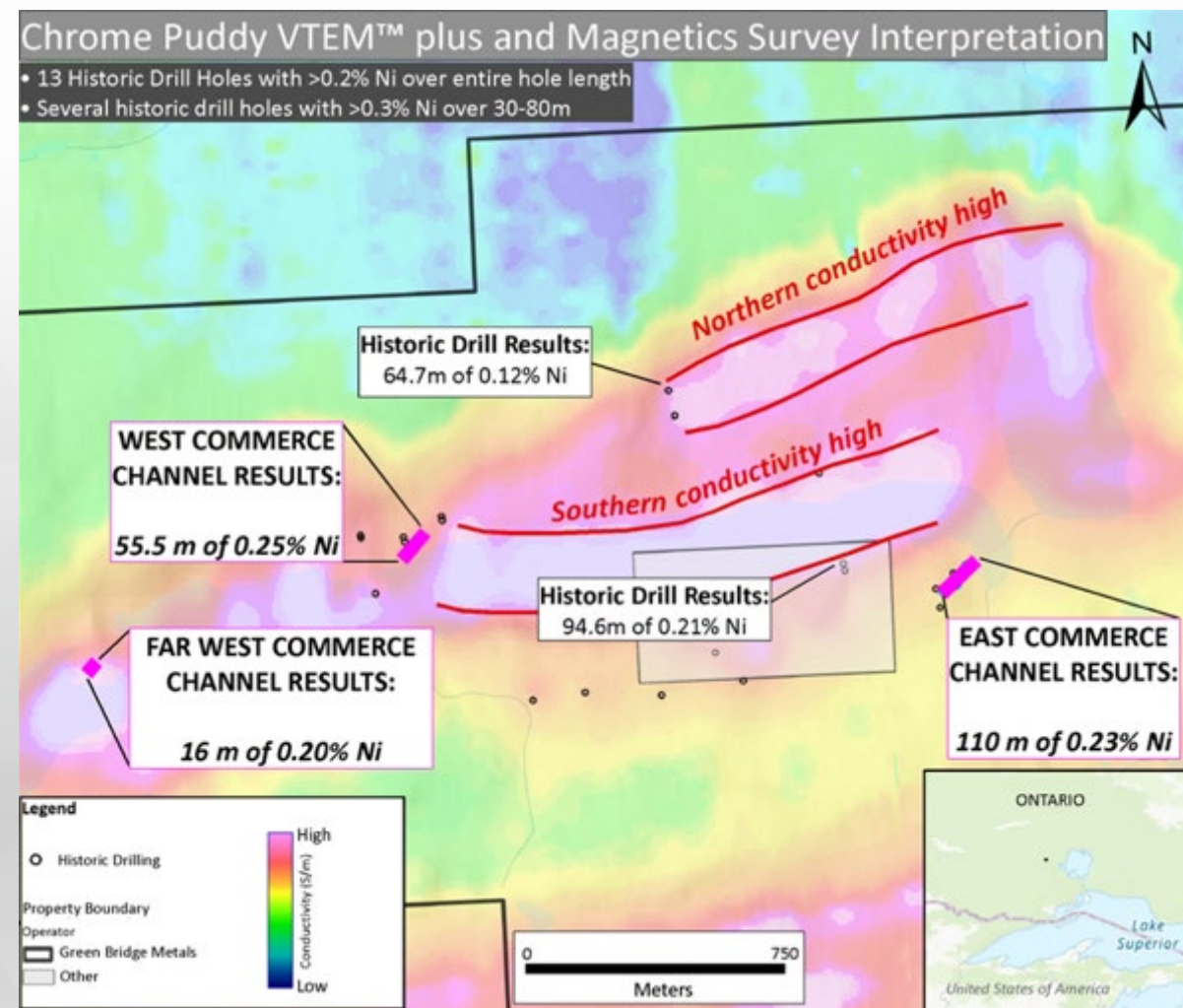
Magmatic Ni-PGE: Excellent Geophysical Indications for Mineralization

VTEM Results:

- Untested northern conductivity high **1 km x 200 m**
- Southern conductivity high **1.5 km x 400 m**
- Only the edge has been drill tested with historical results up to 94.6m of 0.21% Ni

Channel Samples:

- Continuous channel at the Far West Commerce, West Commerce, and East Commerce areas that yielded cumulative Ni assays <0.25% over 10's of meters



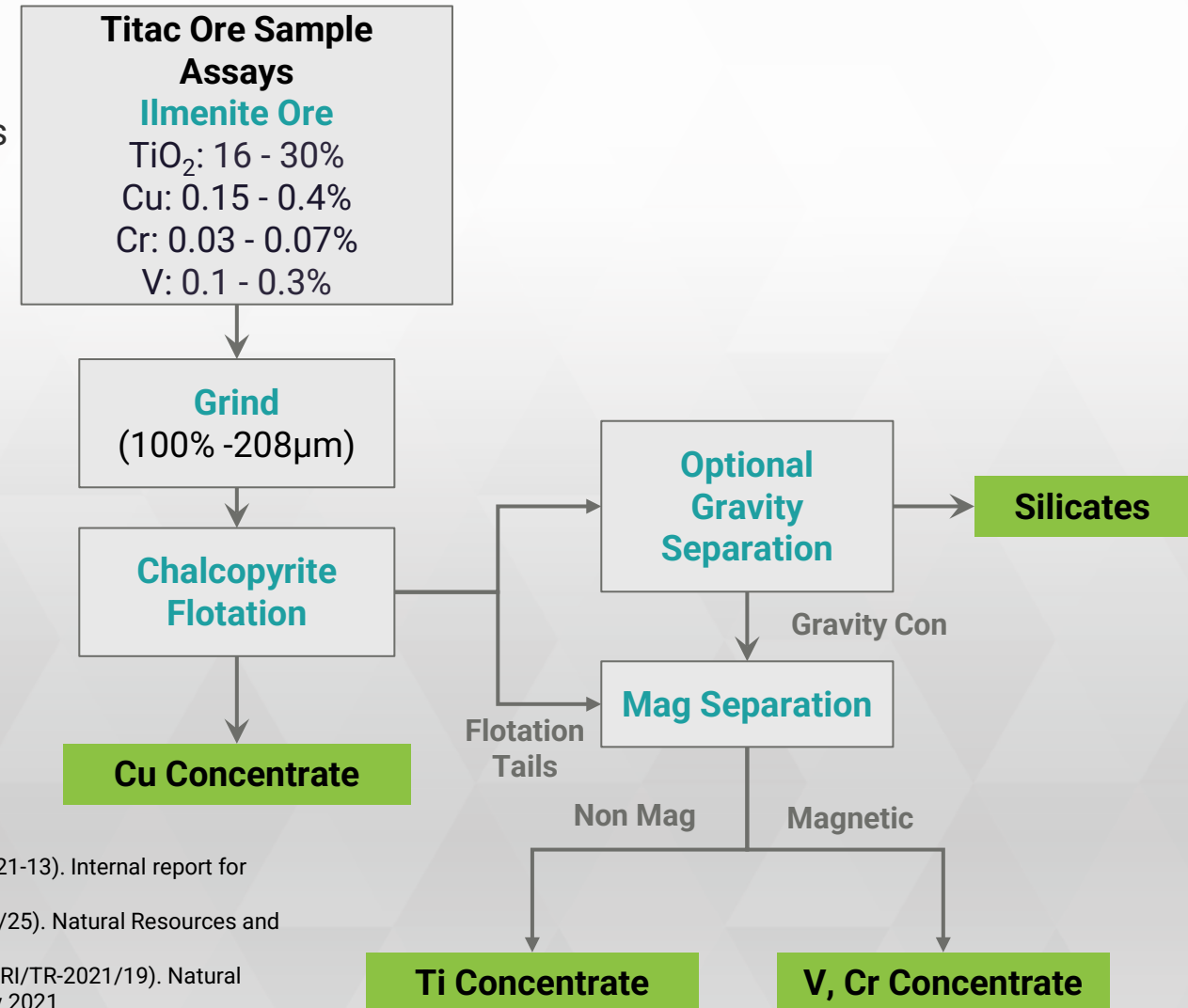
Titac – Preliminary Ore Processing

Northern Minnesota, U.S.A.

- New advancement in hydrometallurgical processing highlights potential to produce Ti, Cu, and V-Cr concentrates
- Preliminary Metallurgical investigation conducted by Process Research ORTECH Inc (PRO) (2021) on Titac core samples¹
- Recovery of Ilmenite from ore: ~64%¹
- Recovery of Titanium from ilmenite: ~70%²

Product Potential:

- TiO₂ rutile product with a purity of ~99.5% TiO₂ used as a precursor for pigment manufacture³
- Fe₂O₃ (hematite) product of >95% Fe₂O₃ used as a feed stock for direct reduced iron (DRI) processes³

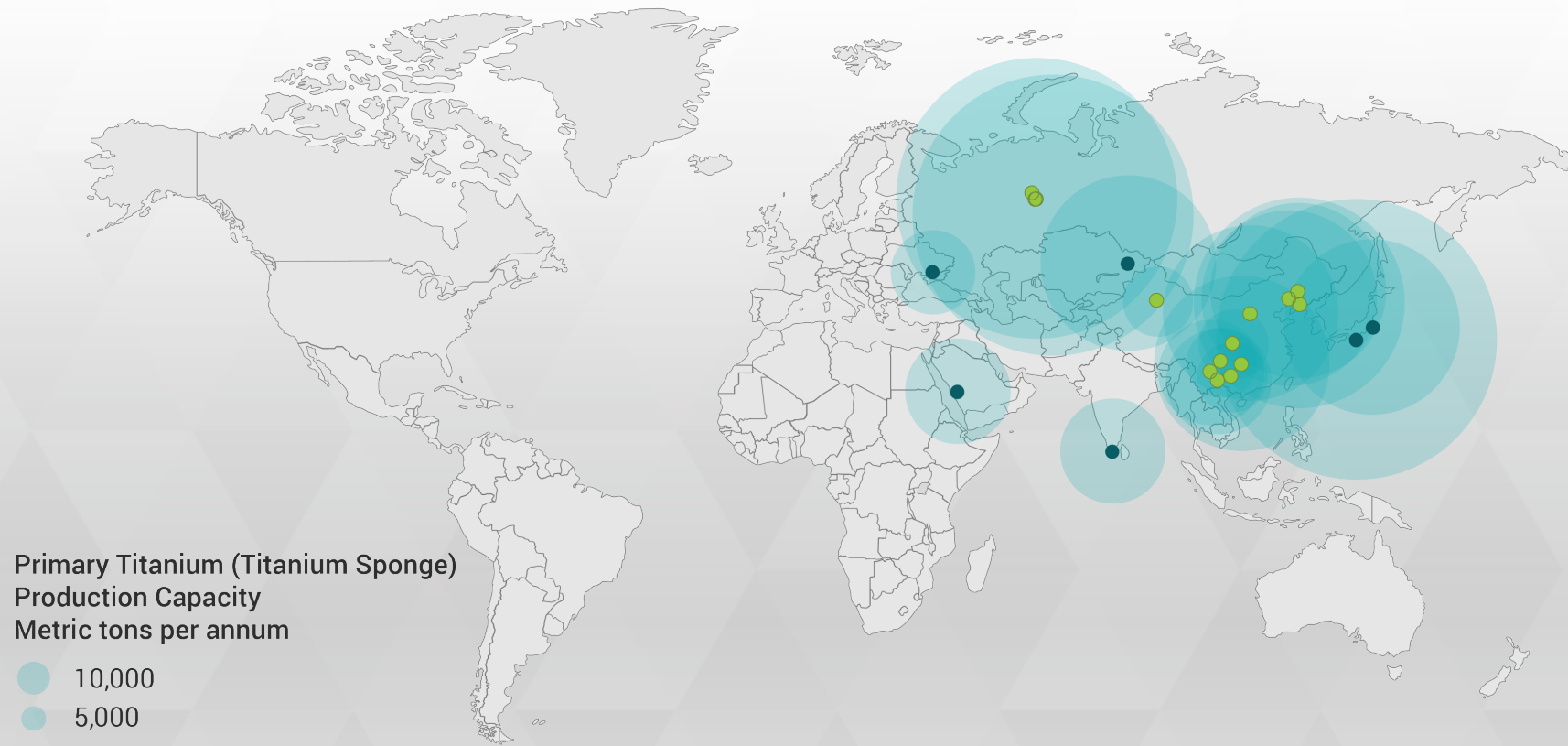


1. Process Research Ortech Inc. 2021. "Titac Ilmenite Deposit: Metallurgical Recon Investigation" (PRO 21-13). Internal report for Encampment Minerals Inc. December 2, 2021.
 2. Milnar, M. Et. al. 2017. "Pilot-Scale Demonstration of Ilmenite Processing Technology"(NRRI/TR-2017/25). Natural Resources and Research Institute, University of Minnesota Duluth. Process Research Ortech (PRO). May 24, 2017.
 3. Hudak, G., et.al. 2021. "Continuous Pilot-Scale Demonstration of Ilmenite Processing Technology"(NRRI/TR-2021/19). Natural Resources and Research Institute, University of Minnesota Duluth. Process Research Ortech (PRO). May 2021

South Contact Zone

2023 Global Sources of Titanium

China and Russia control ~70% of the global titanium supply chain



Source: U.S. Geological Survey. Locations shown are approximate. Primary global titanium supply chain.

Directors



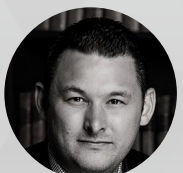
David Suda, President, CEO & Director

Mr. Suda contributes 15 years of capital markets expertise, with a focus on corporate strategy, capital raising, sustainability performance, and marketing. He served as a managing director at Beacon Securities Ltd. and Paradigm Capital, raising over \$10 billion for private and public firms. Mr. Suda graduated with honors from York University, holding a bachelor's degree in environmental studies. His strong industry relationships and financial acumen make him a valuable asset to the company.



Mark T. Brown, Director

Mr. Brown holds a Bachelor of Commerce Degree from the University of British Columbia and is a member of the Institute of Chartered Accountants of British Columbia. He has extensive experience as an officer and director in multiple public and private companies, focusing on transactions, financings, and corporate financial planning. He managed financial departments at Eldorado Gold and Miramar Mining, and co-founded Rare Element Resources Ltd., listed on the TSX and NYSE AMEX, prior to which he was with PricewaterhouseCoopers



Christopher Mackay, Director

Mr. Mackay, a renowned professional, brings extensive expertise in real estate and investment. As President of Strand Financial Corporation, he spearheads the company's U.S. real estate operations, managing tasks like acquisition analysis, development, and financing. Under his leadership, the company has built a portfolio of 3,000 strategically located properties across major U.S. markets, a testament to his astute decision-making and strategic acumen.



Robert G. Krause, Director

Robert G. Krause is a highly experienced geologist with over 40 years in mineral exploration across North, Central, and South America. A graduate of the University of British Columbia (UBC) in 1985, he has held senior roles, including exploration geologist, project manager, and Vice President of Exploration, with a focus on gold, copper, nickel, and PGE deposits. Mr. Krause has led successful projects in challenging environments, including the discovery of a +1-million-ounce gold-equivalent deposit in Honduras, later acquired by Geomaque Mines and Glamis Gold. He has also played a key role in raising venture capital for junior mining companies and managing multi-million-dollar exploration budgets in the Arctic, South America, and Brazil. In addition to running his own geological consulting business, Mr. Krause has held directorships and contributed to corporate growth and strategy throughout his career.



Tyler Lewis, Director

Mr. Tyler Lewis, CEO and Director at Right Season Investments Corp, has achieved sustained growth through astute investment strategies. With 10+ years in the cannabis and nutraceutical markets and a strong accounting background, he excels in identifying undervalued private and public firms. Mr. Lewis is dedicated to enhancing shareholder value and his business acumen and commitment to results make him a valuable asset to the company.

Technical Team



Dr. George Hudak, Technical Advisor

Dr. George Hudak is an economic geologist/applied volcanologist with specific expertise in exploration for Precambrian volcanic- and structurally-hosted base-metal, precious metal and critical mineral deposits and their associated mineralizing systems. Development of higher-value products and more efficient utilization of mineral resources have been key components of the research he has done over the last two decades of his career. He spent 15 years at the Natural Resources Research Institute (NRRI), an applied research lab in the University of Minnesota system research enterprise, where he worked as a senior researcher and Director of the Minerals and Metallurgy research group. George received his Bachelor's, Master's and Doctoral degrees in Geology from Carleton College, the University of Minnesota Duluth, and the University of Minnesota, respectively.



Dr. Ajeet Milliard, Chief Geologist

Dr. Milliard is an accomplished exploration geologist with over 14 years of experience in metals exploration. She holds a PhD in Economic Geology from the University of Nevada, Reno and an M.Sc. in Structural Geology from Oregon State University. Previously, she was part of the exploration team at Newmont Mining, contributing to the development of the Long Canyon Mine in Nevada. For the past five years, Dr. Milliard has excelled in the junior mining sector, specializing in project generation, management, and evaluation.

Technical

2026 Drilling:

- Titac (Q1): 6 diamond core holes; 1800m (fully permitted)
- Serpentine: 3 diamond core holes, exploratory in nature but large diameter to second as hydrogeological testing wells (fully permitted)

Sampling:

- Five core holes from Skibo will be assayed with results scheduled for Q1 2026
- Cumulative results will determine if further exploration drilling is warranted.
- All core from Titac will be analyzed for trace elements, whole rock, and PGE assay.

Operational:

- Signed Contract Agreement with Foraco to drill at Titac (<2,000m)
- Engaged with local Barr Engineering office for environmental and geological contractors for upcoming drill program
- Comprehensive white paper on Titanium Dioxide produced and will be used during U.S. government engagement
- Working with public relations groups local to Minnesota for optics in the community and transparency.